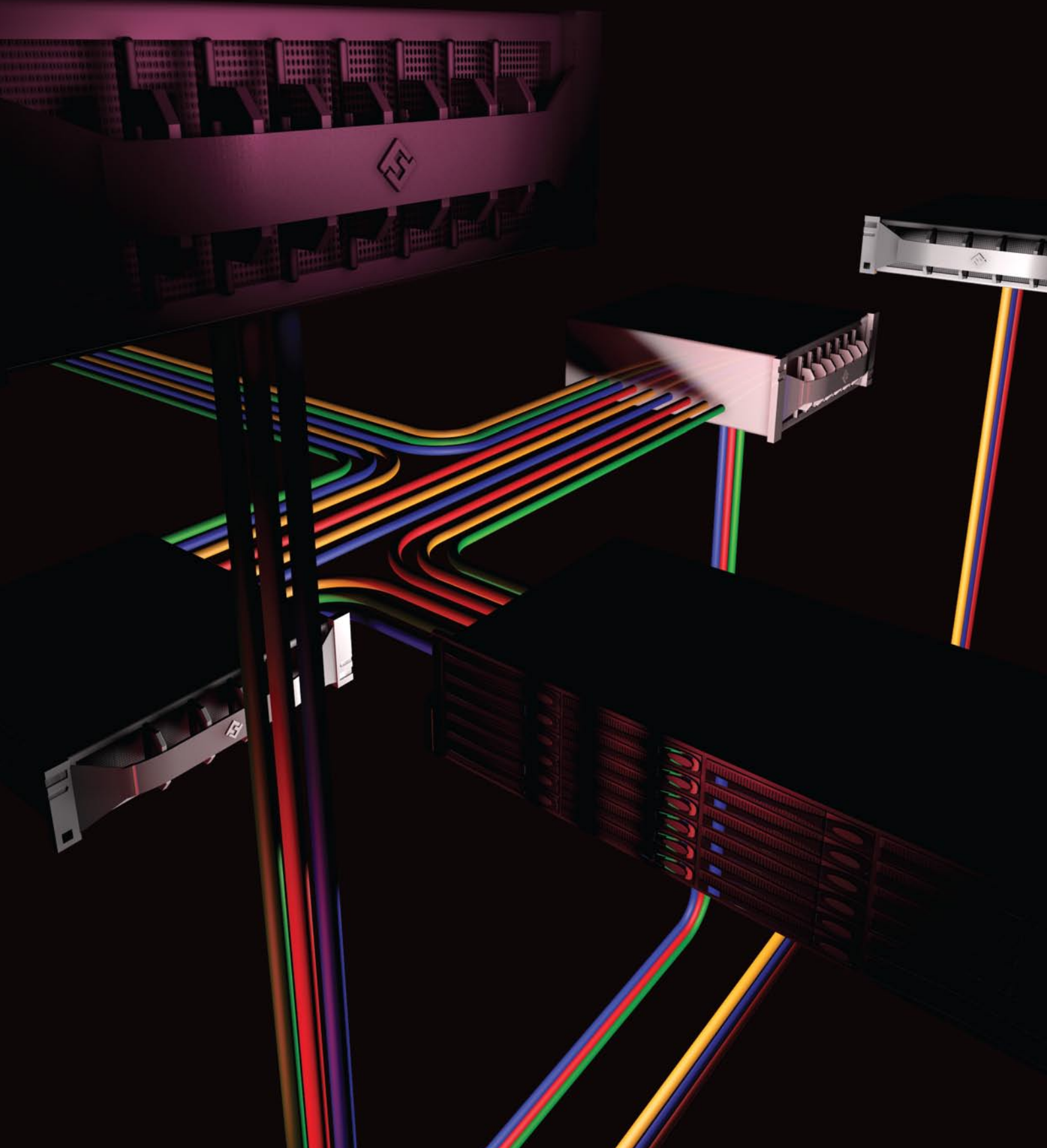




# FIRSTSERV

Complex Hosting

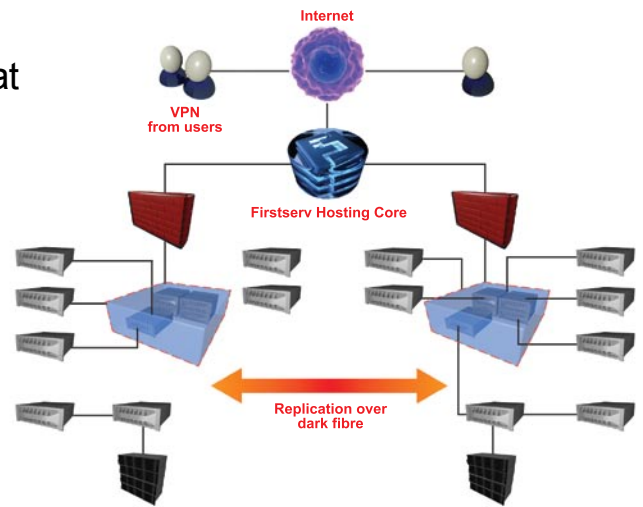


# Complex Hosting

Firstserv Complex Hosting is ideal for high throughput websites and online applications that require resilient and scalable hosting solutions.

Whatever combinations of physical or cloud hosting, local or SAN storage, Windows or Linux operating systems you need, Firstserv can design a solution to ensure the ultimate uptime and performance of your hosted environment.

If the flexibility and resilience offered by Complex Hosting is of interest to you, please give us a call and one of our sales advisors will put together a custom solution for you.



## Benefits of Firstserv Complex Hosting

<b>Powerful Architecture</b> Taking advantage of our cloud infrastructure your hosting environment can grow and shrink in line with demand, and is hosted across multiple datacentres for exceptional resilience.	✓
<b>Fully Managed</b> Deployed, configured and managed by Firstserv with guaranteed 100% availability. Your IT staff can focus on developing real business value, while we manage your hosting infrastructure.	✓
<b>Multiple Data Centre Disaster Recovery</b> Hosting your applications in multiple data centres means that your application won't go down in the event of a disaster. VMware High Availability allows for immediate resolution of the outage by switching between data centres.	✓
<b>SQL Clustering failover</b> If one SQL Server fails another will automatically take over, meaning no downtime for your critical data.	✓
<b>SAN Space</b> Multiple SANs allow data to be mirrored across multiple data centres, thereby protecting data and allowing for instant recovery from disaster. Full backups to SATA arrays provide extra data protection.	✓
<b>Flexible Hybrid hosting</b> You can provision cloud (virtual), dedicated (physical) and colocation (your own) servers on the same network. Hardware load balancing helps you scale your web servers to handle growing or spikes in internet traffic.	✓
<b>24 Hour Support</b> Our support helpdesk is available 24x7 by email or freephone. Firstserv support engineers are all highly skilled, with a focus on Networking, Infrastructure and Systems Administration.	✓
<b>Reliability</b> 24hr network monitoring and fault detection, Direct 100Mb/s connection to our Tier-1 backbone in the Firstserv data centre, 100% uptime Service Level Agreements.	✓

You need a hosting company that is focused on you. We promise to understand and meet your needs. Choose Firstserv with confidence.